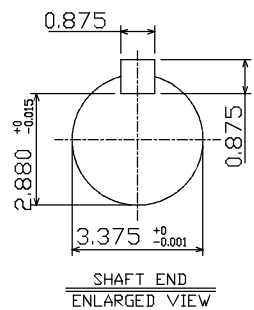
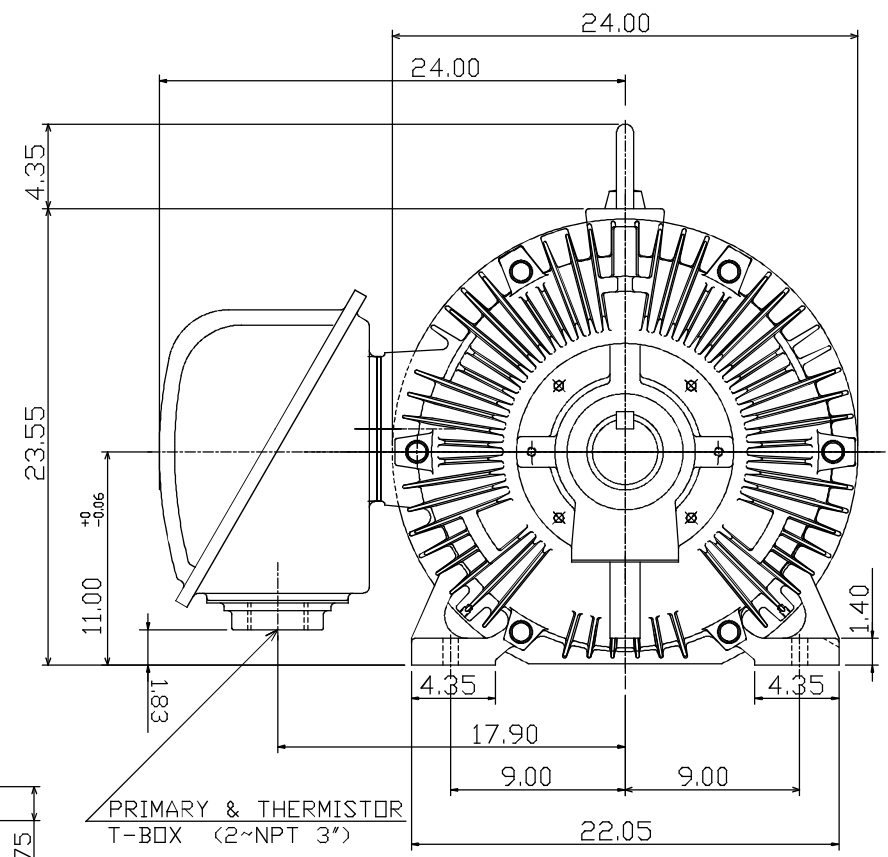
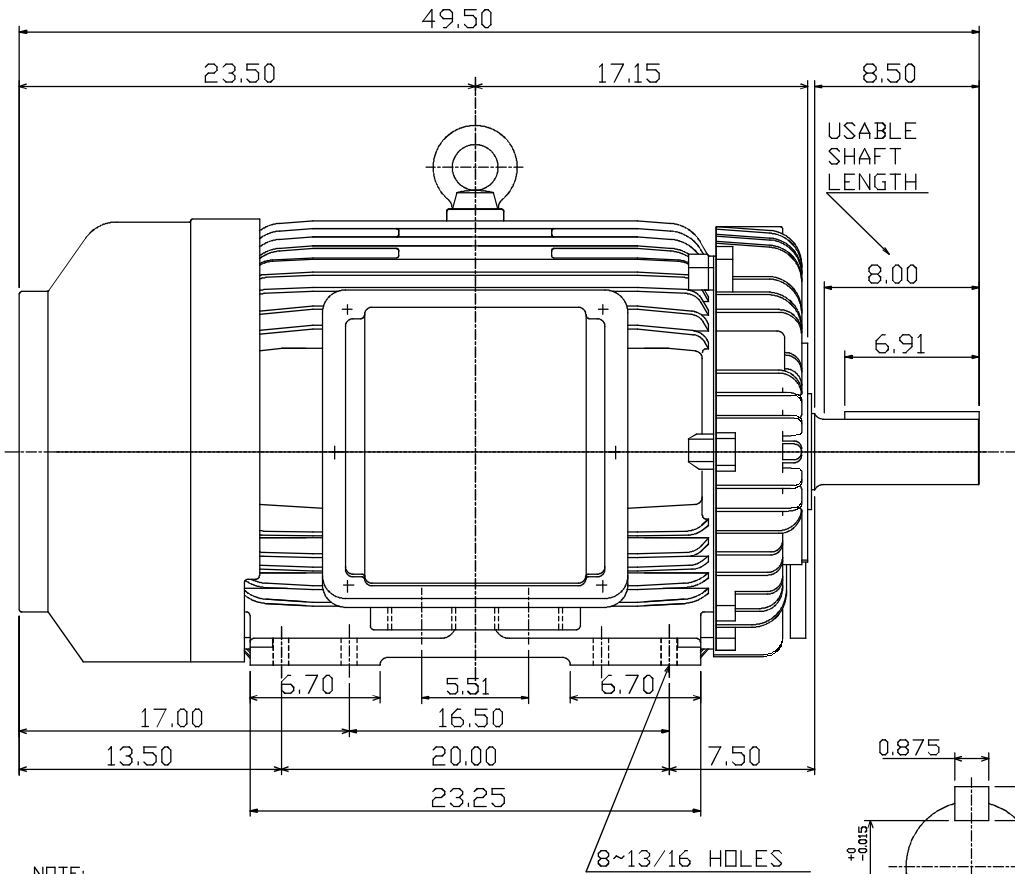


Downloaded from Dealers Industrial Equipment -- Visit <https://DealersElectric.com> or call (908) 688-1966 for all of your Teco needs!

TYPE	OUTPUT		POLE	TIME RATING	VOLTAGE V	Hz	SYN.SPEED R.P.M
	HP.	kW.					
AEEAGD	125	93	8	CONT.	230/460	60	900

TOTALLY ENCLOSED FAN-COOLED TYPE, SQUIRREL-CAGE ROTOR



- NOTE:
1. DIMENSIONS IN INCHES
 2. FRAME NO. 447T
 3. F CLASS INSULATION, S.F.1.15
 4. FOR BELT SERVICE
 5. BEARING SIZE: DRIVE END: 6320C3
NON-DRIVE END: 6316C3
 6. ENCLOSURE: IP55
 7. WITH THERMISTOR: PTC 140°C 3PCS
 8. SHAFT MATERIAL: SCM440 Q&T (AISI 4140 EQUIV)
 9. CORROSION PROOF
 10. MOTOR APPROX. WEIGHT: 2450 LBS

DWN.	C. RAM	DEC 01 2015
DWN.	S.LEE	DEC•22•2006
CHKD.	S.LEE	DEC•22•2006
APPD.	C.WANG	DEC•22•2006

CATALOG NO.
CD1258

TECO **Westinghouse**

OUTLINE DIMENSIONS
3-PHASE INDUCTION MOTOR

DWG NO. REV: 00
3B040R345

TW-56BC